

LADYBIRD CLASS

PEEK AT THE WEEK ~ 1.6.26

Hello!

Welcome to this week's newsletter and the beginning of the final term of the year. Luckily the weather will be cooler for the return to school.

Please keep an eye on dates for this term - there are a number of things happening, some just for children and some that include parents.

We have a dance workshop on Thursday during the morning and will be learning moves to a song from Matilda.

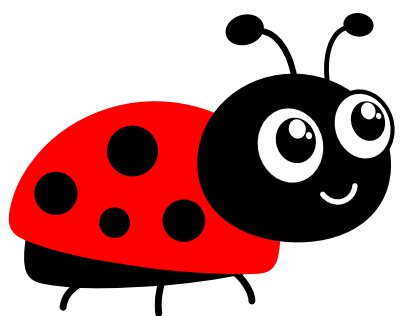
This week's learning

Phonics - Week 4, Level 4 this week and Kit and Sam visit the library as they help us to read polysyllabic words with adjacent consonants anywhere in them. You will find accompanying sheets on the Ladybird page of the school website.

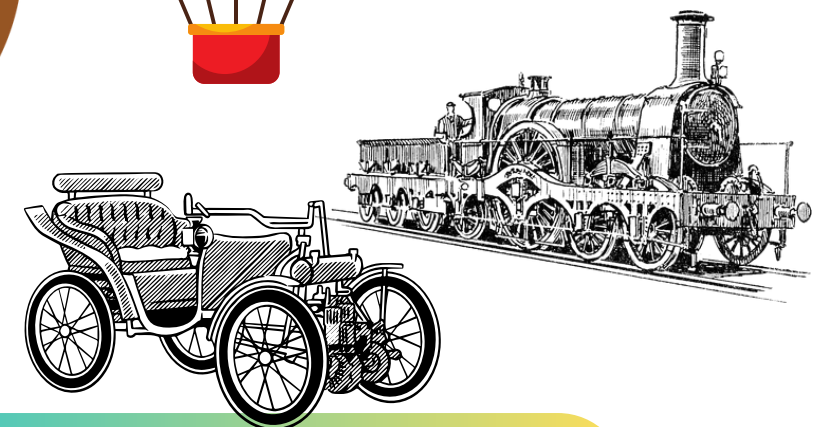
Maths - Week 2 of sharing and group. This week our focus will be grouping and what happens when we try to group odd and even numbers. We will also recall doubles and have a look at a half of a number, finding out how they are linked.

Literacy - Our book this week is called 'We're going on a bear hunt' - a classic book that enables the children to focus on recalling repeated refrains and writing sentences about settings in the book.

Handwriting - During handwriting we will be practising letter formation by revisiting letters in the Lemur Ladder family. When visited previously these were the long ladder letters.



DON'T FORGET TO VISIT THE LADYBIRD PAGE ON THE SCHOOL WEBSITE FOR MORE INFORMATION



OUR TOPIC LEARNING

- We start a new topic this week - Around the world - What journeys do we make?
- We will start by thinking - what is a journey and what types of journeys so we make?
- In future weeks we will see how many types of transport we can name as well as looking at how it has changed over time. How have cars changed in the last 100 years? Have there always been aeroplanes to help us visit different parts of the world?
- Our PE topic this term is also linked and we think about how we can move around an area.

Contact

You can reach me by email. I aim to answer emails within 24 hours, if they are sent after 5pm on a Friday this may be longer.

E-mail:

nstafford@stadhampton.oxon.sch.uk

